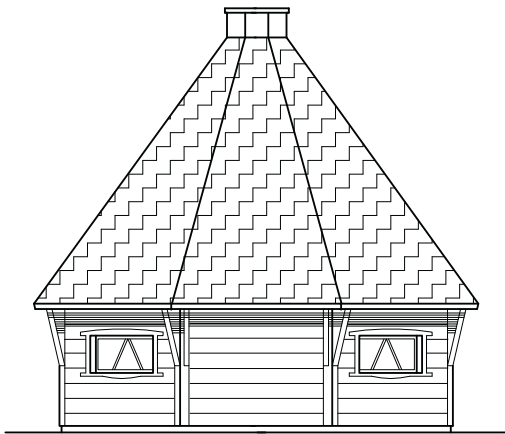
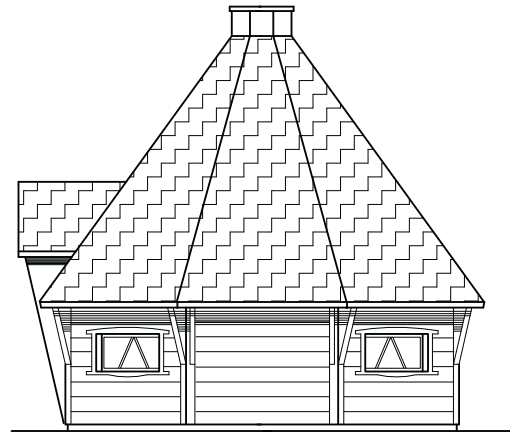
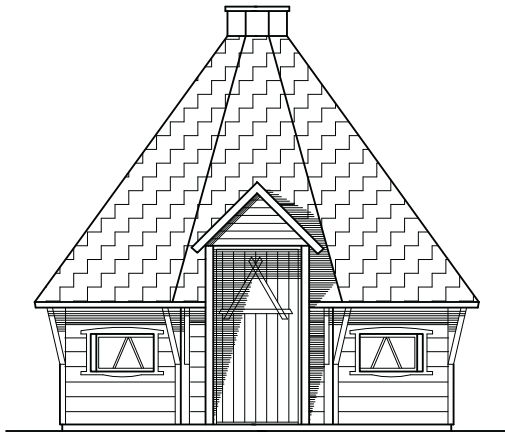




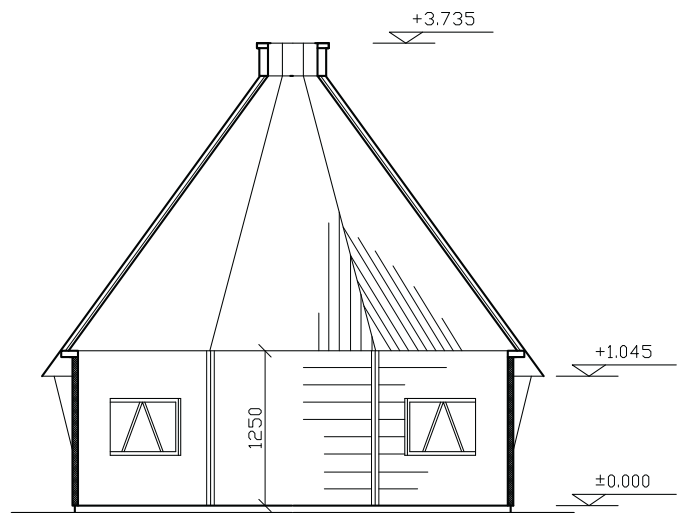
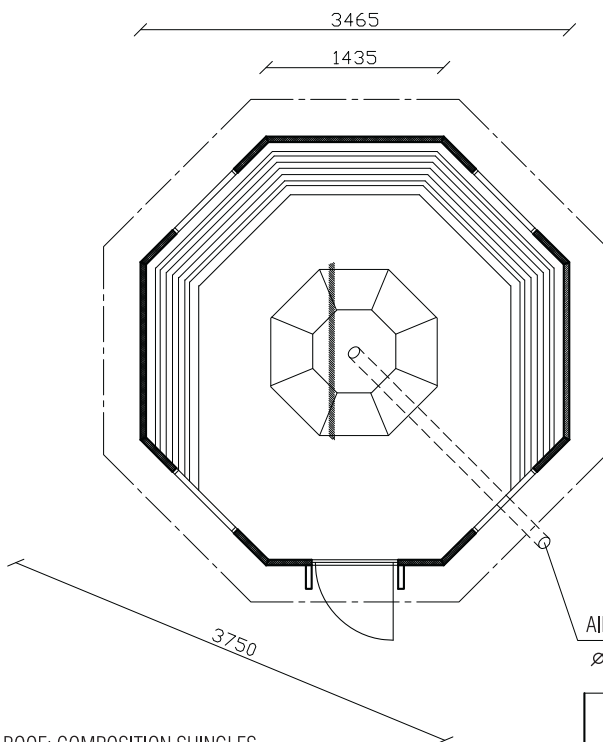
**BARBEQUE HUT 9,9 M²
BUILDING
INSTRUCTIONS**



TIMÄPUU



TIMAKOTA 9.9 M ²
FACADES 1:50



AIR INLET DUCT
 Ø 200 MM

TIMAKOTA 9.9 M ²
BOTTOM AND CROSS-SECTION 1:50

ROOF: COMPOSITION SHINGLES
 VERTICAL SHUTTERING (18 MM)
 WALL: PLANED LOG (45 X 145 MM)

You will need the following tools to build your hut:
 hammer, saw, measure, knife, a strong screwdriver, a spirit level, ladder, drill bits and screwdriver bits, carpet knife with hooked blade (for the roofing) and 3 wooden props for raising the roof (ca. 3.5 m in length).



1. Put the wall elements in place.



2. Attach the wall elements to each other with 6 x 120 screws.



3. Make sure the top parts of the walls are even with each other.



4. Secure each corner.



5. Check the cross-measure.



6. Place the outer corner supports on each corner (6 x 60).



7. The upper edge should be even with the top of the wall.



8. Fasten the ledges on top of the wall (6 x 80).



9. Begin from the back wall by placing a ledge even with the corner of the wall.



10. The short boards for the door part come last.



11. Screw the boards together from the outer corners (6 x 120).



12. Attach the re-entrant corners (6 x 80).



13. Fasten the inside corner fillet



14.



15. Drill holes in the bench supports



16. Fasten the three longest supports (6 x 80) first.



17. Then install the six shortest supports (6 x 80).



18. Fasten two supports equivalent in length to the back of the hut on the right- and left-hand sides.



19. One support (6 x 80) goes on the right as seen from the door.



20.



21. Put the bench planks in place.



22. Fasten the bench planks (6 x 80).



23. Install the windows and fasten the molding.



24. Fasten the side table on the wall next to the door (5 x 30).



25. Place the roofs so that they lean against the pavillion.



26. Raise the roofs one at a time; use the three 3.5-meter props to help you.



27. Begin with the part for the door.



28. Screw the roof elements together immediately after you raise them up (6 x 80).



29. Put all of the roof elements in place.



30.



31. Fasten the roof elements to the ledges from the bottom (6 x 80).



32. Fasten the composition roofing material to the corners.



33. Cut and turn the bottom of the corners under the roof.



34. Saw open the door opening.



35.



36.



37. Fasten the doorframe so that it is even with the inside edge (6 x 110).



38. Put the door casing in place (6 x 80).



39. Make sure the door works properly and make adjustments, if necessary. Fasten the doorframe to the casing (6 x 60).



40. Turn the roofing material up against the casing and cut it to make it neat.



41.



42. Lift the small roof over the door and fasten it through the frame (6 x 80).



43.



44. Make sure the roofing on the small roof goes under the roofing on the pavilion roof.



45. Put a piece of roofing on the upper corner of the small roof to prevent water from getting inside.



46. Cut the roofing on the small roof and nail all of the edges, including the roof over the door.



47. Fasten the door molding inside and outside.



48.



49. Put the chimney in place.



50. Fasten the chimney in place (6 x 80).



51.



TIMAPUU

Timapuu Oy Marttila
Verkkotehtaankatu 12
FI-95420 TORNIO
+358 (0)400 698 198
www.timapuu.fi